

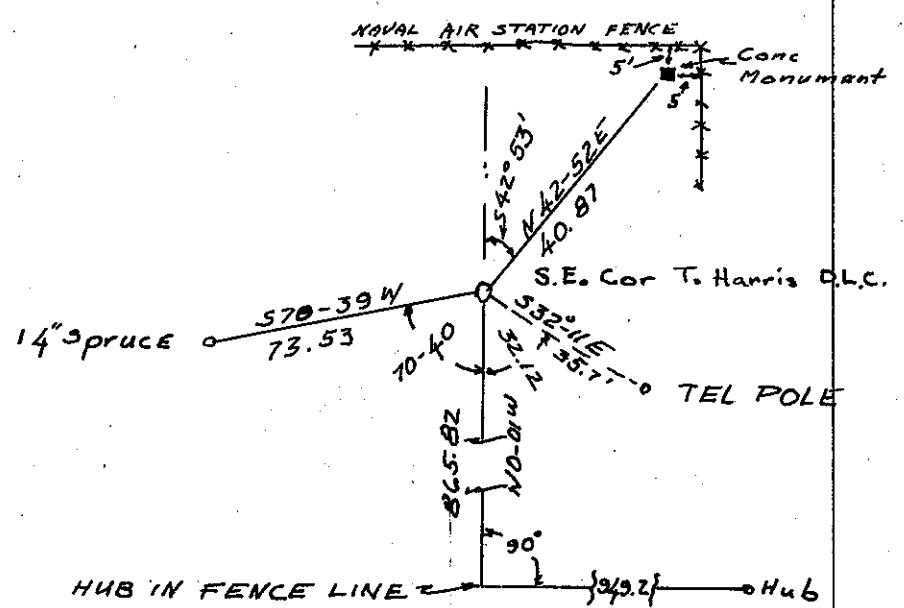
CHAINS
 1/16 cor
 NE cor of
 SW 1/4 of SW 1/4
 of sec 3
 T2S R9W

 1/4 cor on
 east side
 sec 3
 T2S R9W

 SE cor
 T. Harris
 D.L.C.

Set 1 1/2" iron pipe from which a
 24" hem bears N77E 30.2 ft
 20" hem bears S23E, 26.0 ft
 In the presence of W. E. Anderson and Francis L. Smith
 April 1952

Set 1" iron pipe from which
 36" hem bears N80E, 2.0 ft
 36" spruce bears N15E, 9.0 ft
 In the presence of W. E. Anderson and Francis L. Smith
 April 1952



In the presence of W. E. Anderson and Francis L. Smith

~~SEE XXX XXX~~
~~XX, XX, XX~~
~~XXX XXX~~
 J.S. Tripp
 D.L.C.
 SW Cor

Old witness tree made in Nov. 9, 1894 is now a stump, outside
 face and scribe marks are plainly visible but remainder of
 stump is badly decayed.

New BT's
 16" spruce bears S2W, 8.9 ft.
 30" spruce bears N81E, 83.9 ft
 In the presence of W. E. Anderson and Francis L. Smith
 D^c 15, 1952

NW cor
 Sec 7
 T3S R10 W

Found gal iron pipe filled with concrete and brass cap in
 bad condition. Set new 1 1/2 inch gal iron pipe marked sec
 7, 6, 1, 12, T3S R10W & R11W. Old BT S60W, 310 ft was listed as
 a spruce but is a 48" fir with blaze did not chop out marks

~~XX~~
 Distance to blazed face is 27.6 ft and 30 ft to cet of stump
 Made New BT
 50" spruce stump north, 10.5 ft.
 In the presence of W. E. Anderson and Francis L. Smith
 Aug 8, 1953.

1/4 cor bet
 33, 34
 T1S R10W

Found old helock blowdown chopped out marks on hemlock
 N30-30W, 4 ft. Also, found hemlock SE but could not see
 marks as the tree was rotted down.

New BT's
 5" hem S13-40E, 21.5 ft
 8" hem N67-20W, 11.0 ft
 In the presence of W. E. Anderson and Van cise, Dec 1953